

harmony™

METER DATA MANAGEMENT + DATA ACQUISITION SOFTWARE





harmony™

METER DATA MANAGEMENT + DATA ACQUISITION SOFTWARE

Harmony Enterprise™ Suite is an open platform, designed to be compatible with nearly every AMI Network on the market today. Its integrated Google® Mapping Tools and advanced Meter Data Management (MDM) features provide an exceptional environment for managing, reporting, and analyzing advanced metering infrastructure and mobile data acquisition systems. Leveraging the Microsoft® Azure™ cloud, Harmony delivers super-fast performance bringing the Internet of Things (IoT) into any sized water utility. Additionally, Harmony is compatible with nearly every billing system on the market and can provide added value and analytics to most Customer Information Systems (CIS), in addition to a wide variety of Asset Management and GIS Software.



HARMONY ENTERPRISE™ SUITE

METER DATA MANAGEMENT + ANALYTICS



ENGAGING DATA PRESENTMENT

Review system consumption and make sense of it with a wide array of chart and map views. Harmony's Dashboard Overview is "Widget" based for easy customization and graphical display. Analyze system-wide consumption relative to precipitation to better understand environmental impacts on demand and utilize Harmony's "Consumption Cluster" mapping tool for a graphical model of high-and-low consumption regions.

RECOMMENDED SYSTEM REQUIREMENTS: ENTERPRISE

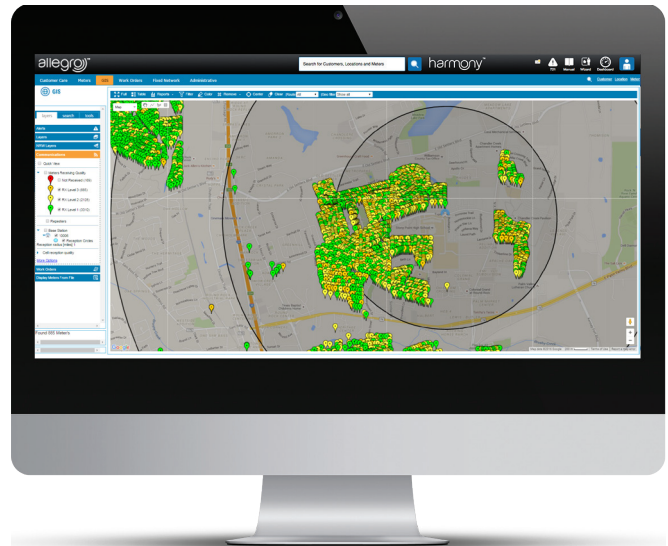
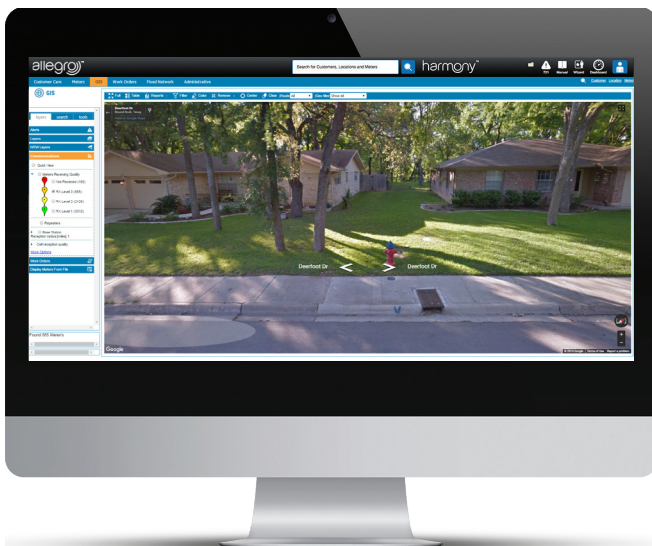
- Intel® Core™ i3 (or Equivalent) Processor
- 2 GB RAM
- 50 MB Available Hard Drive Space
- Microsoft® Windows® 7 Professional, or Later
- Microsoft Internet Explorer® 10 (or Equivalent) Web Browser
- Adobe® Reader® XI, or Later
- 1200x800 Video Resolution with 32-bit Color
- High-Speed Internet Connection (10MB Download / 512KB Upload)

GOOGLE INTEGRATION

Harness the power of Google Maps in Harmony's GIS Module. Mapping tools include: Elevation Measurement, Terrain Elevation Chart, Distance Measurement, and Geo-coordinate Display. Google Streetview™ is also included to provide quick inspection of a service location prior to a truck roll and can also be used as an integrated window on the GIS Map. Create District Metered Zones (DMZ) in a few simple clicks with Harmony's "Polygons" to easily measure water loss.

24/7 MONITORING

With Harmony, both water loss and network performance is monitored in real time. Receive immediate notification of leak alerts and other forms of tamper. Leverage your AMI network's true two-way communication capabilities with On Demand Reads and Data Logging directly from Harmony. Quickly scroll and zoom through the network to view RF performance and health to preemptively manage issues before they become serious.

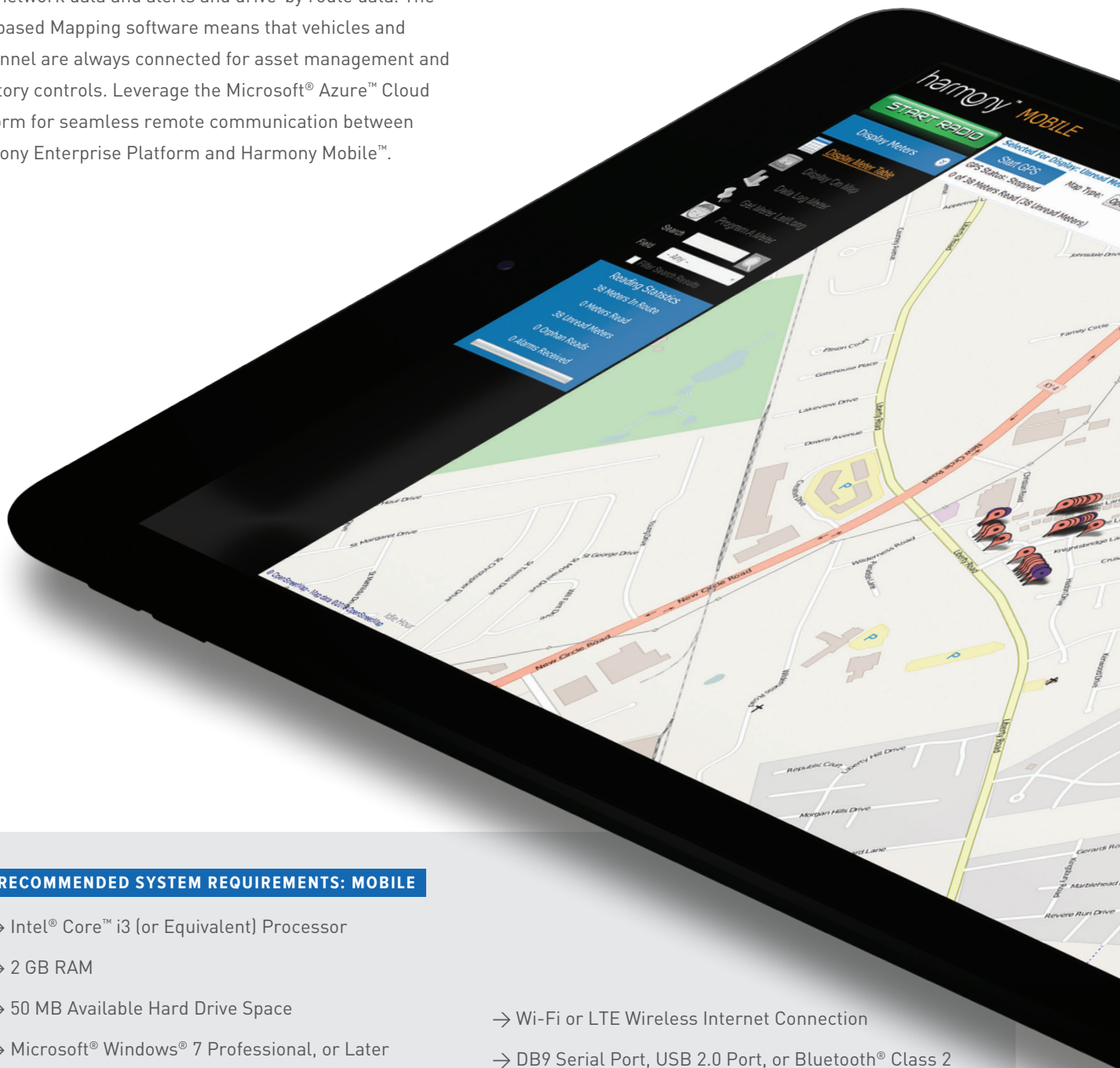


HARMONY MOBILE™ SOFTWARE

DATA ACQUISITION

HARMONY'S FLEXIBLE DATA MANAGEMENT

Harmony's broad interoperability allows integration between fixed network data and alerts and drive-by route data. The GPS-based Mapping software means that vehicles and personnel are always connected for asset management and inventory controls. Leverage the Microsoft® Azure™ Cloud Platform for seamless remote communication between Harmony Enterprise Platform and Harmony Mobile™.



RECOMMENDED SYSTEM REQUIREMENTS: MOBILE

- Intel® Core™ i3 (or Equivalent) Processor
- 2 GB RAM
- 50 MB Available Hard Drive Space
- Microsoft® Windows® 7 Professional, or Later
- 1200x800 Video Resolution with 32-bit Color
- Microsoft .Net Framework Version 3.5, or Later
- Wi-Fi or LTE Wireless Internet Connection
- DB9 Serial Port, USB 2.0 Port, or Bluetooth® Class 2 Wireless Connection
- NMEA 0183 Compliant GPS Receiver



REVENUE IMPACT ALERTS™

Leak Alerts and Flow Monitoring assist in reclaiming lost revenue from unaccounted for water and right-sizing of meters. In addition, notifications for theft and tamper are relayed back to the Cloud for analysis and actions. Inactive meters are also identified and queued for inspection.

TWO-WAY COMMUNICATIONS

In-Field, two-way communication allows for minute-by-minute analysis of consumption. Quickly and easily request an on-demand data log to view 15-minute interval reads. Remote programming of Meters and Remote Firmware Upgrades are also available through Harmony Mobile's software package.



MY WATER ADVISOR™

CUSTOMER ENGAGEMENT SUITE



WEB PORTAL + SMART PHONE APPS

Place the power of Harmony in the hands of the rate payer, with the My Water Advisor™ customer engagement suite. The online portal allows for convenient access to up-to-date hourly usage data. The chart view allows for daily, monthly, and yearly review of water usage and also shows a comparison to the user's peers for real accountability. This full-featured water portal allows the user to set up alerts for on premises leak detection, over-budget notifications, and also to set vacation periods to be notified of unauthorized usage.



Available in both iOS and Android, the My Water Advisor™ mobile app puts the power of the online portal in the rate payer's hands allowing for simple management of their usage via a smart phone.



MOVING AT THE SPEED OF TECHNOLOGY™

Master Meter is intent on driving new and innovative ways to manage the vast amount of data flooding into Smart Cities and Utilities. We're a high-service solutions provider specializing in advanced metering, data delivery, and Utility Intelligence (UI) software and our portfolio of new and innovative technologies continue to grow in support of a dynamic and rapidly changing global water market. Mindful of a tight and very finite water supply, Master Meter is here to support your conservation efforts, ensuring ample supply for generations to come. Join us.



WWW.MASTERMETER.COM